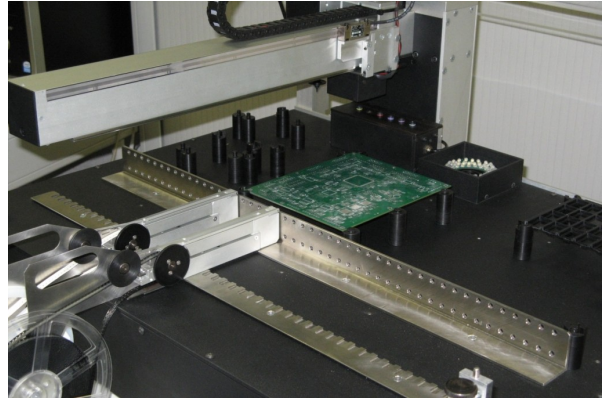
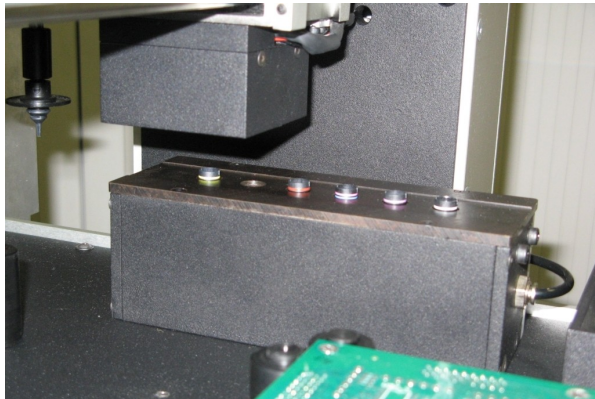
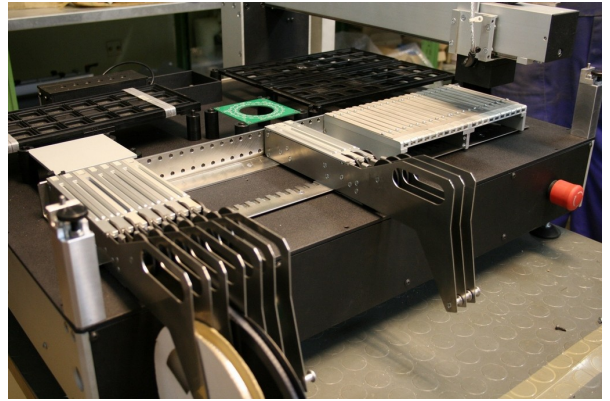


SMT pick & place system P50



• TECHNICAL DATA

- **PCB**
 - max. placement area 400 x 500mm
- **Components range**
 - from 0402 up to 40 x 40mm
 - Pitch min. 0,4mm
 - BGA / μ BGA
- **Components packing**
 - tapes / sticks / trays
- **Components centering**
 - non-contact alignment
- **Placement rate**
 - up to 3000 cph
- **Feeder**
 - up to 80 x 8 – automatic tapes feeder and
 - 2 x (300 x 200mm) - IC-tray with 200 x 300mm PCB size
- **Resolution**
 - X / Y Axis - 0,008mm
- **Placement accuracy**
 - +/- 0,08 mm
- **Dimensions and weight**
 - 1040 x 750 x 1300 mm / ca. 145 kg
- **Supply**
 - 230 V - 50 Hz - 350 W / 0,6 Mpa -15 l/min

• KEY FEATURES

- SMT pick and place machine
- machine stand
- 2 automatic pick & place heads
- automatic nozzle changer (2x6 tools)
- camerasystem for automatic fiducial
- camerasystem for touchless components centering
- CAD – editor for pick & place files
- intelligent feedersystem – CAN Bus
- image processing system
- operating system: Windows XP
- control panel: PC keyboard / Mouse
- user interface - PC and 17" LCD monitor
- **Application range**
 - middle volume production
 - pick & place of standard and fine pitch components incl. BGA and μ BGA